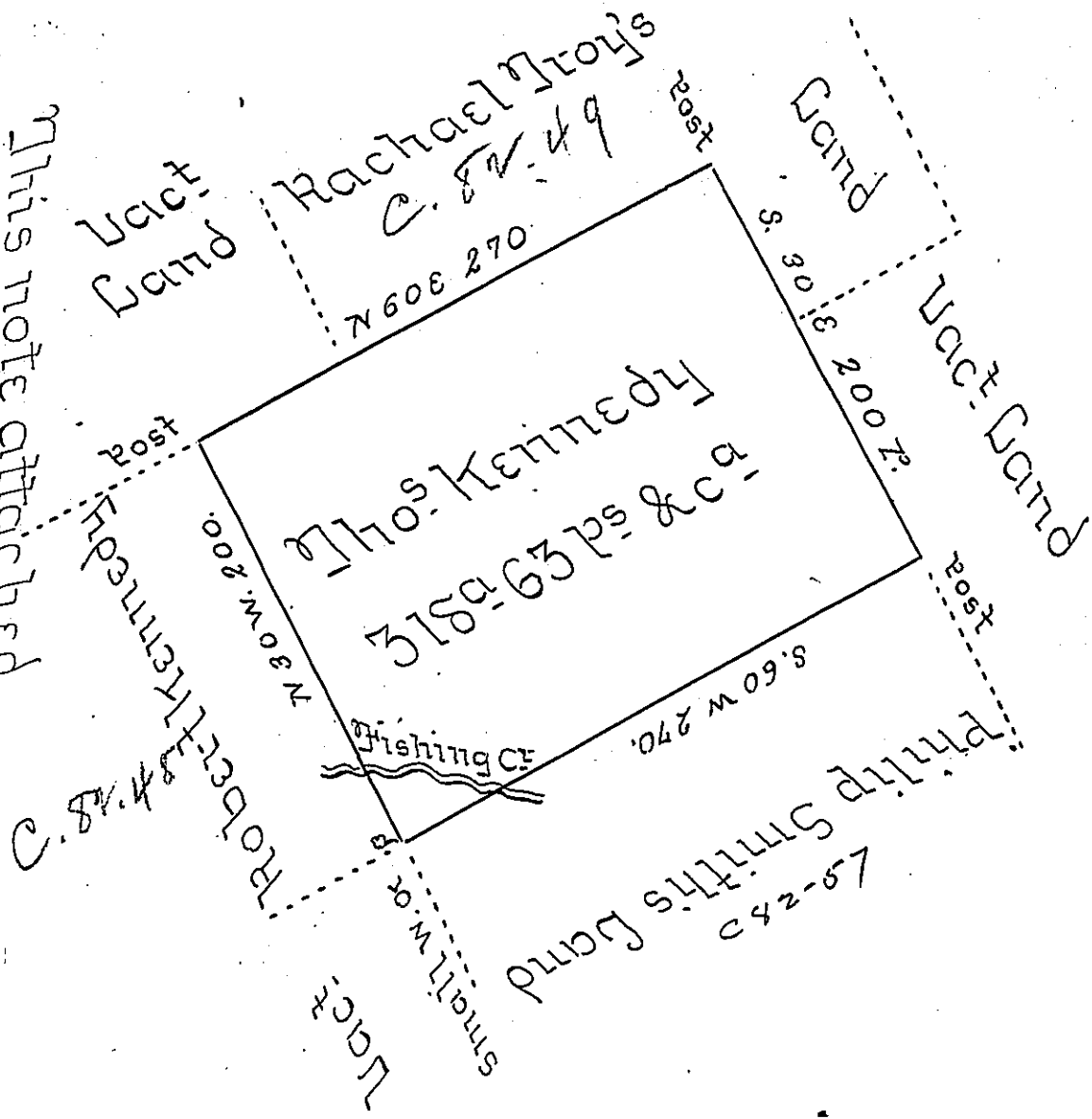


This note attached  
 Doct<sup>r</sup> Morgan desires that no patent  
 issue for this land to Kennedy or his  
 assigns - alleging that he hath prior  
 order for the same or part thereof  
 25<sup>th</sup> May 1774.



A Draught of a Tract of Land Called Dimestone-Hall situate on Fishing Creek a branch of Bald Eagle in the County of Cumberland Surveyed the 25<sup>th</sup> day of Oct<sup>r</sup> 1769 to Thomas Kennedy in pursuance of his Order of Survey No 3799 Dated the 31<sup>st</sup> day of August 1769. Containing Three hundred & eighteen acres & Sixty three perches & allow<sup>ce</sup> of 6 PC<sup>t</sup> -

P. Chas Lukens DS

To John Lukens Esq<sup>r</sup>  
 Surveyor-General

IN TESTIMONY that the above is a copy of the original remaining on file in the Department of Internal Affairs of Pennsylvania, made conformably to an Act of Assembly approved the 16th day of February, 1833, I have hereunto set my Hand and caused the Seal of said Department to be affixed at Harrisburg, this seventh day of February 1905.

*Isaac D. Brown*  
 Secretary of Internal Affairs.